

Our Location
The EnergyTouch Center
216 W Main Street Unit 2
Lowell, Michigan

We are located in the new EnergyTouch Center in downtown Lowell, MI.

The city of Lowell offers many opportunities for after-hour explorations, including live music performances on the Lowell Riverwalk, dining in a variety of restaurants, and an eclectic mix of stores and antique shops. We are also only twenty minutes from the world renowned and not-to-be missed Frederik Meijer Gardens & Sculpture Park in Grand Rapids where a music concert is included with admission every Tuesday evening throughout the summer.

Accommodations

We currently have an arrangement with the Main Street Inn, located just a few steps away from our location in downtown Lowell. You can make reservations with them by calling directly and asking for the EnergyTouch discount. They are a small inn and rooms go quickly, so don't delay.



Main Street Inn - (616) 897-1171
www.mainstreetinnlowell.com

To find other accommodations, we recommend you search for hotels on the east side of Grand Rapids.

EnergyTouch makes no promise as to value or quality of any accommodations, and we encourage you to shop for your best accommodations.

Year-One begins May 03, 2027

Application process

Prerequisite Training - EnergyTouch® Basics
Fee: \$800

An introduction to the basics of EnergyTouch Healing including Dolphin Breath®, the foundation of EnergyTouch® Healing. **SAVE This fee will be deducted from your YR-1 Tuition if you are accepted into the program.**

Application

Call or write for an application by mail or download the current application at our website www.energytouchschool.com.

Annual tuition is \$5,700.

See the application for payment plans and a money-saving opportunity.

For more information including prerequisite fulfillment opportunities contact:

EnergyTouch® School of Advanced Healing

PO Box 158, Lowell, MI 49331

Ph: 616/233-3001

or

email: info@energytouchschool.com

or visit us on the web

"I'm so grateful to have been guided to this school. I believe I will now be the healer that I was meant to be. Thank you!!

Mary R

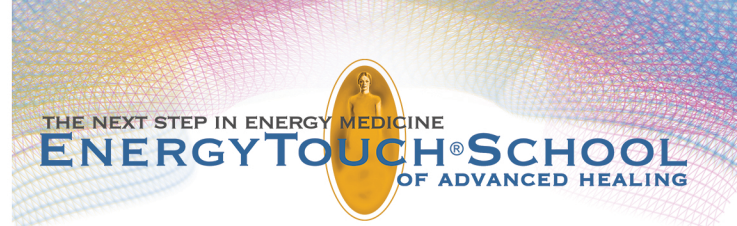
"I came to school to heal others and have found I am healing myself. My inner child has lived through my children and grandchildren, and now I can live through myself."

Patti L

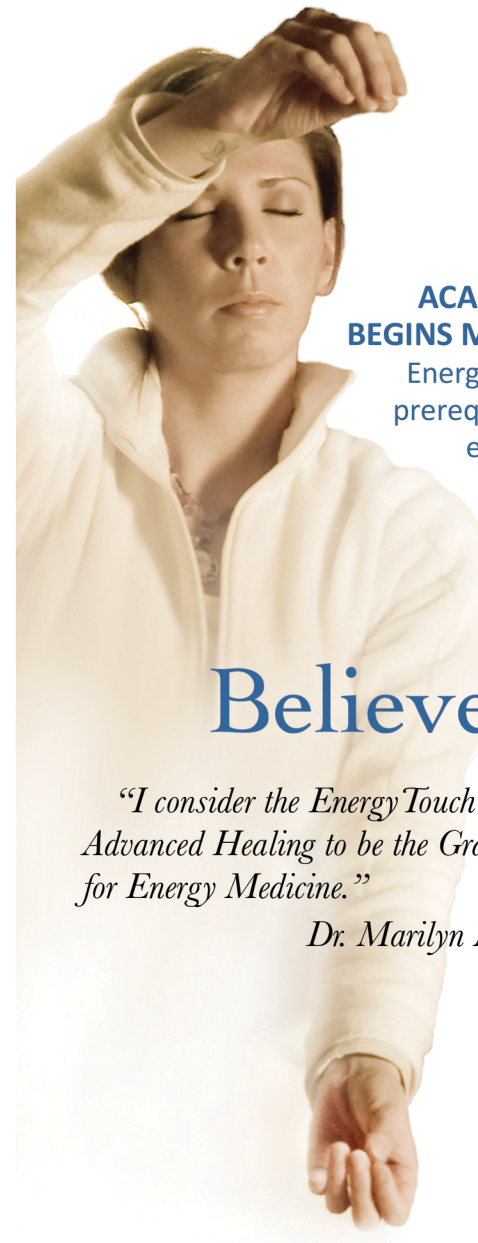
"This has been a life-changing process of growth for me. Thank you for your perseverance and devotion to listen to your guides and bring forward the beautiful healing work of EnergyTouch."

I am deeply grateful."

Love, Laura C



YEAR ONE - 2027



ACADEMIC YEAR
BEGINS MAY 03, 2027

EnergyTouch Basics prerequisite training events happen throughout the year.

Believe!

"I consider the EnergyTouch School of Advanced Healing to be the Graduate School for Energy Medicine."

Dr. Marilyn Mitchell, MD
2004 Graduate

SINCE 2004

Believe!

Imagine for a moment that you are able to explore the Outer Levels of the Human Energy Field. Within these levels lie energy layers and chakras, earth grids, energetic tools and as yet unrealized healing abilities, all waiting to be reclaimed and utilized in ways that are unique to you and your Guidance. Are you ready to step into that reality?



Tricia Eldridge
Founder & President



The Program

The EnergyTouch® School of Advanced Healing introduces students to the outer levels of the human energy field. These include chakras and energy levels beyond the seven levels taught at traditional energy healing schools. The individual attention paid to students by Tricia Eldridge and the teaching staff creates a safe and gentle environment where powerful learning can take place.

The EnergyTouch® School of Advanced Healing is a three-year program designed for adults who will travel to West Michigan four times per school year using both classroom and home study to complete their training. Students receive hands-on instruction and lectures from Tricia and her staff. Small class size is maintained to insure direct contact with each student. Classes are scheduled in five-day increments, allowing students to continue to maintain their healing practices or other employment while discovering new skills for use with their clients. Homework assignments allow students to integrate these new skills into their practice and report immediate results. Students are also encouraged to explore their own unique talents and share their experiences, joys and fears in a safe environment of compassion and respect.

The EnergyTouch® Healing program is recommended for anyone who wishes to:

- Become a professional EnergyTouch®Practitioner
- Expand upon their professional energy healing skills
- Add energetic healing skills to those of their professional health-care training
- Evolve as a human being

2027 YEAR-ONE STUDENT SCHEDULE	
WEEK 1	MAY 03 -07
WEEK 2	JUL 12 -16
WEEK 3	SEP 13 - 17
WEEK 4	NOV 01 -05

business owners, laborers, artists, musicians and more who



connection to individual Guidance and the ability to Believe that all things are possible. We delight in watching our students discover and bring forward the healing gifts that are uniquely theirs.

Upon the successful completion of the three years of study and a demonstration of proficiency in all aspects of EnergyTouch® Healing, a certificate of completion is bestowed.

Our Students

Our students form a diverse group of individuals with backgrounds in many professions. Some are practicing members of the health-care community with intentions of integrating EnergyTouch® Healing with their current practice. They work as medical doctors, registered nurses, psychotherapists, etc. Others are

desire to become professional EnergyTouch® Healers. Still others will use their skills to enhance their personal growth.

At the EnergyTouch® School of Advanced Healing, all religious persuasions are welcome, and all belief systems are respected.

Our curriculum supports a student's development of a strong

Year-One - Welcome to the Outer Levels

As a Year-One Student you will discover the tools and skills unique to the Outer Levels and Chakras 8 - 14. You will be introduced to templates, grids and layers found within these Outer Levels and learn of their unique properties and potentials for healing on the cellular level. You will immediately begin to utilize the hologram, working off the body to access micro and macro views of the outer level energy fields, organs, systems, and cells. You will discover the crystalline field, karmic field, belief systems and cellular memories, while at the same time creating an even stronger connection to your Guidance. By the end of Year-One the successful student will be: retraining the body to no longer react to allergens, pulling different types of viruses, bacteria and parasites from the field, healing broken bones, working with the 8th Level crystalline structure, re-encoding energetic cell structure including DNA, the Mitochondria, and more.

Year-Two - Re-remembering

In Year-Two you will deepen your skills on Levels 15 - 28, focusing on individual ailments at the cellular level as well as on the consciousness of those individual ailments. Your connection with your Guidance will be enhanced, allowing you to begin working with energetic surgical teams on the 21st level. With their assistance you will perform energetic organ transplants and introduce stem cells to facilitate new tissue growth.

You will work with diseases, afflictions and ailments. Autoimmune diseases & thyroid disorders, stem cells, the regrowth of tissue, bone marrow, cancers and more will be addressed. On these outer levels, you will help your client's individual cells to re-remember what it is like to be healthy and clear of disease.

Year-Three - Deeper into the Levels & Dimensions

In Year-Three we will focus on working with specific health issues. Our focus includes:

- Taking your skills to deeper Levels and delving deeper into the Dimensions
- Working deep within the brain
- Autism Spectrum Disorders - working with children and the parents of children diagnosed in the autism spectrum
- Working with children with developmental delays
- Mental Illness - what we should and shouldn't do as EnergyTouch Healers - touching on Bipolar & Schizophrenia
- Post Traumatic Stress Disorder (PTSD)
- Aging
- Grief & Depression - working with grief & depression once it has manifested in the physical and emotional body.

Most importantly, throughout these three short years, you as a student will learn to Believe...in your Guidance, your skills and yourself! Each year a new small group of select healers meets in Lowell, Michigan to begin a grand mission: to Believe! You are invited to join us.